

LIV[®] ASTON

NORTH WHARF, MELBOURNE



2 BEDROOM APARTMENT FLOOR PLANS

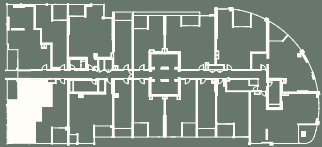
Please speak to our LIV Aston leasing team to find out more about what apartments are available to rent.

APARTMENT TYPE 12 (B6)

2 BED  2 BATH 

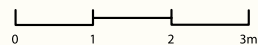
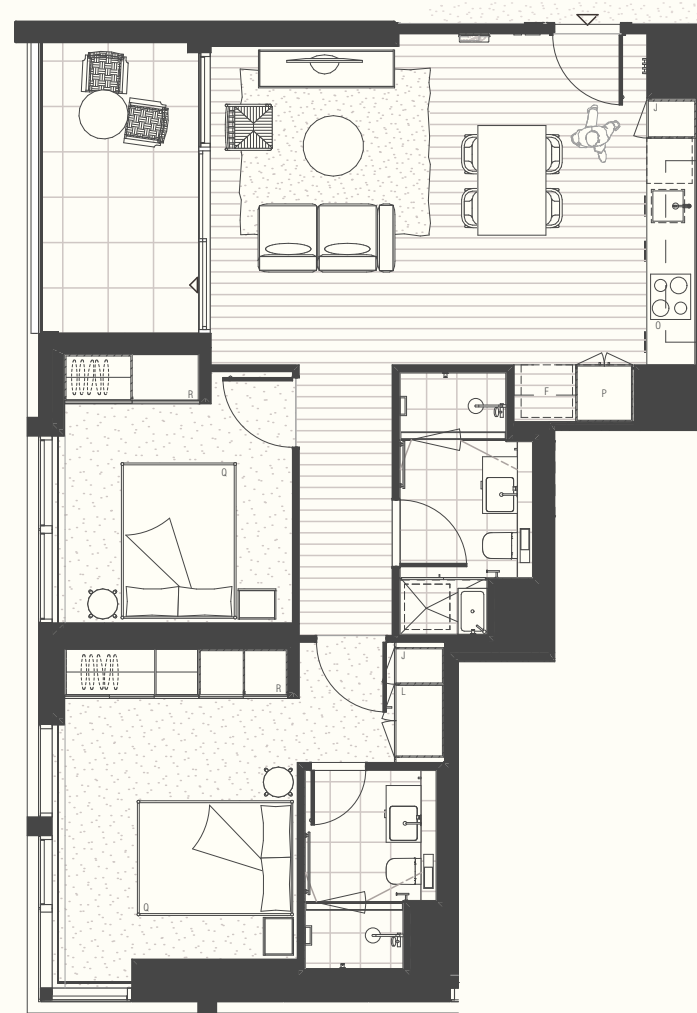
Apartment Area: 84m²
 Balcony/Winter Garden Area: 8m²
 Total Area: 92m²

| | | | |
|---------|---|----------------|---|
| Access | ▲ | Balcony Access | △ |
| Fridge | F | Queen Bed | Q |
| Pantry | P | Linen | L |
| Oven | O | Robe | R |
| Joinery | J | | |



Important Notice

This floor plan was produced prior to construction and while the information contained herein is believed to be correct it is not guaranteed. Changes will undoubtedly be made during construction. The plan does not show additional features such as hot water systems, services or bulkheads necessary for services. Dimensions, areas and scale of floor plans are approximate only. Areas have been calculated in accordance with the Property Council of Australia Method of Measurement. The furniture and furnishings depicted are excluded from the lease of this apartment except where expressly included in a leasing agreement or condition report. Tenants must refer to their leasing agreement and condition report for the list of inclusions. Furnishings should not be taken to indicate the final position of power points, TV connection points and the like. All graphics, including design and extent of tile/paver/carpet areas, landscaping, balustrades, louvres, sun shading devices, fencing, privacy screens, services equipment are for illustrative purposes only and are not to be relied on as a representative of the final product.

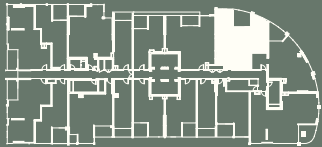


APARTMENT TYPE 2 (B3)

2 BED  2 BATH 

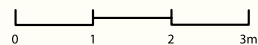
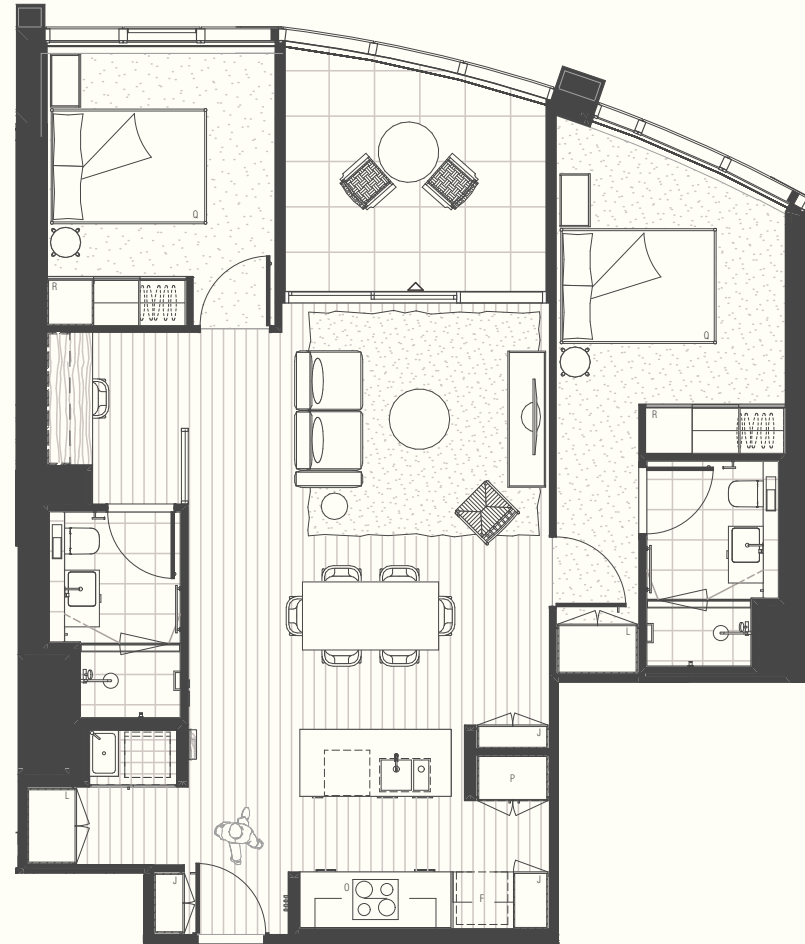
Apartment Area: 95m²
 Balcony/Winter Garden Area: 11m²
 Total Area: 106m²

| | | | |
|---------|---|----------------|---|
| Access | ▲ | Balcony Access | △ |
| Fridge | F | Queen Bed | Q |
| Pantry | P | Linen | L |
| Oven | O | Robe | R |
| Joinery | J | | |



Important Notice

This floor plan was produced prior to construction and while the information contained herein is believed to be correct it is not guaranteed. Changes will undoubtedly be made during construction. The plan does not show additional features such as hot water systems, services or bulkheads necessary for services. Dimensions, areas and scale of floor plans are approximate only. Areas have been calculated in accordance with the Property Council of Australia Method of Measurement. The furniture and furnishings depicted are excluded from the lease of this apartment except where expressly included in a leasing agreement or condition report. Tenants must refer to their leasing agreement and condition report for the list of inclusions. Furnishings should not be taken to indicate the final position of power points, TV connection points and the like. All graphics, including design and extent of tile/paver/carpet areas, landscaping, balustrades, louvres, sun shading devices, fencing, privacy screens, services equipment are for illustrative purposes only and are not to be relied on as a representative of the final product.

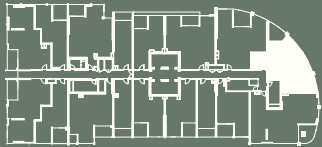


APARTMENT TYPE 3 (B4)

2 BED  2 BATH 

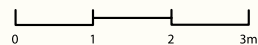
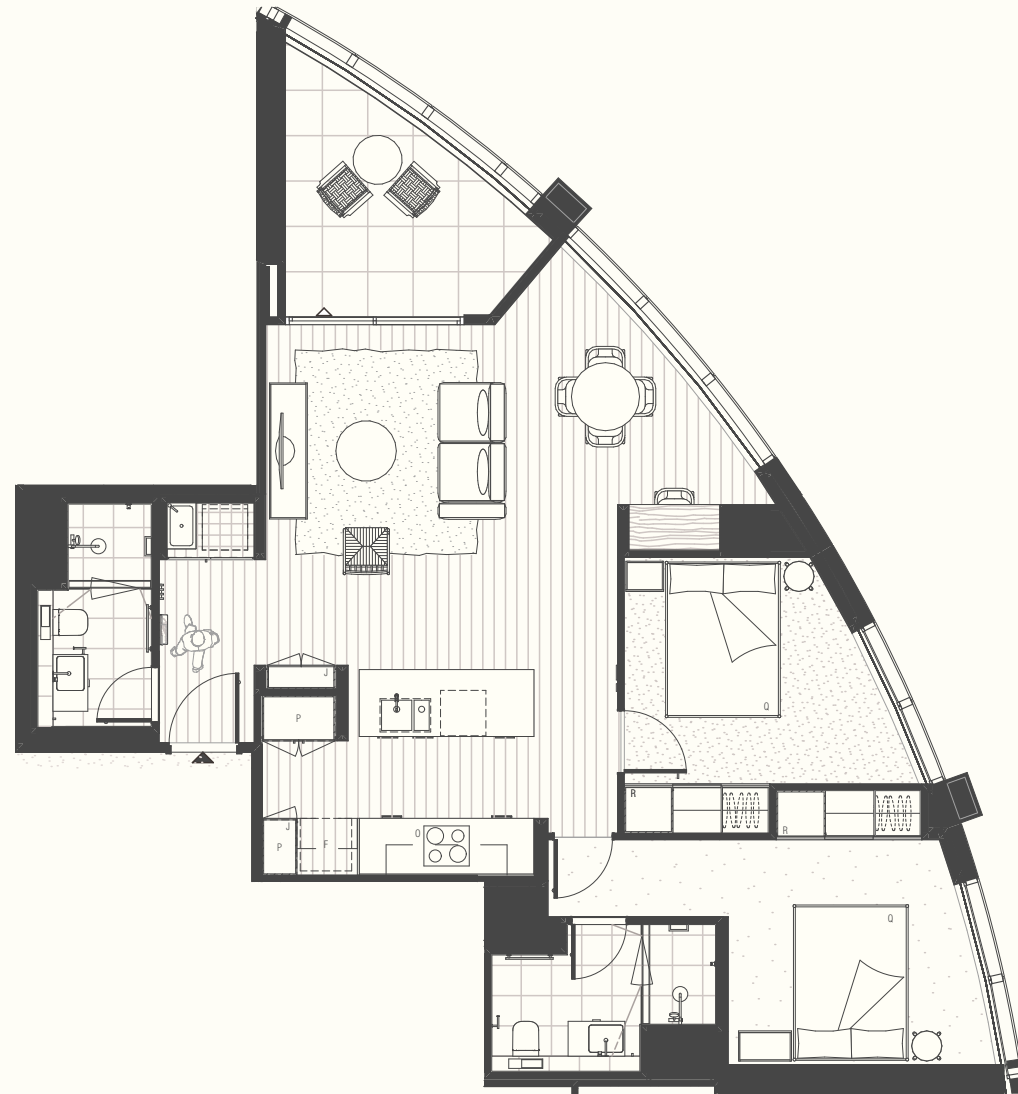
Apartment Area: 90m²
 Balcony/Winter Garden Area: 10m²
 Total Area: 100m²

| | | | |
|---------|---|----------------|---|
| Access | ▲ | Balcony Access | △ |
| Fridge | F | Queen Bed | Q |
| Pantry | P | Linen | L |
| Oven | O | Robe | R |
| Joinery | J | | |




Important Notice

This floor plan was produced prior to construction and while the information contained herein is believed to be correct it is not guaranteed. Changes will undoubtedly be made during construction. The plan does not show additional features such as hot water systems, services or bulkheads necessary for services. Dimensions, areas and scale of floor plans are approximate only. Areas have been calculated in accordance with the Property Council of Australia Method of Measurement. The furniture and furnishings depicted are excluded from the lease of this apartment except where expressly included in a leasing agreement or condition report. Tenants must refer to their leasing agreement and condition report for the list of inclusions. Furnishings should not be taken to indicate the final position of power points, TV connection points and the like. All graphics, including design and extent of tile/paver/carpet areas, landscaping, balustrades, louvres, sun shading devices, fencing, privacy screens, services equipment are for illustrative purposes only and are not to be relied on as a representative of the final product.

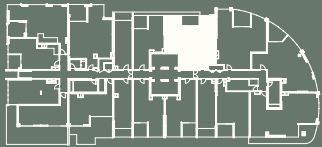


APARTMENT TYPE B2.1

2 BED  2 BATH 

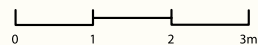
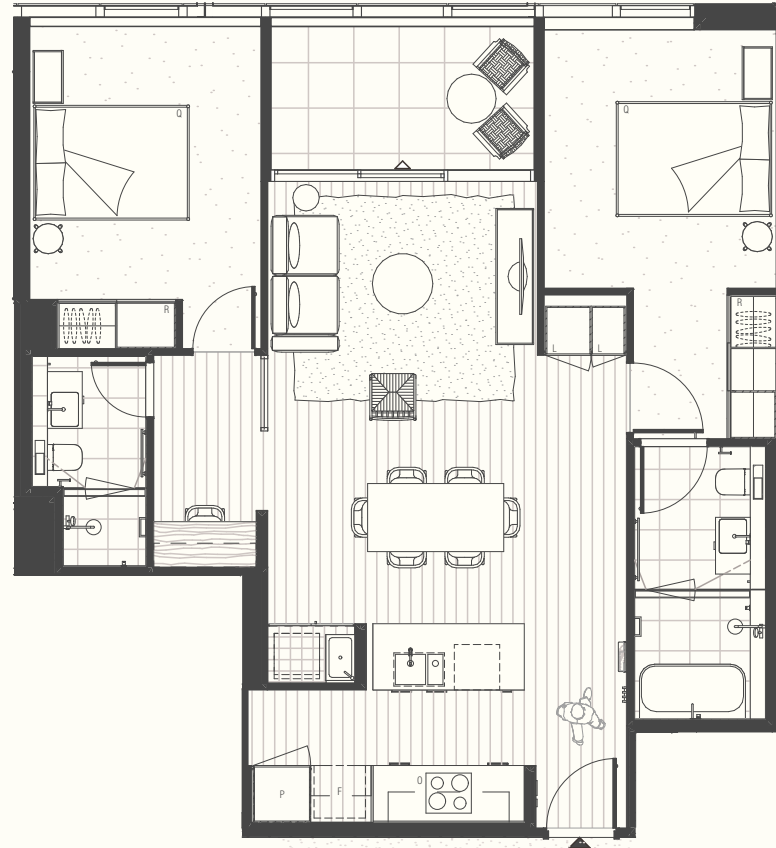
Apartment Area: 93m²
 Balcony/Winter Garden Area: 8m²
 Total Area: 101m²

| | | | |
|---------|---|----------------|---|
| Access | ▲ | Balcony Access | △ |
| Fridge | F | Queen Bed | Q |
| Pantry | P | Linen | L |
| Oven | O | Robe | R |
| Joinery | J | | |



Important Notice

This floor plan was produced prior to construction and while the information contained herein is believed to be correct it is not guaranteed. Changes will undoubtedly be made during construction. The plan does not show additional features such as hot water systems, services or bulkheads necessary for services. Dimensions, areas and scale of floor plans are approximate only. Areas have been calculated in accordance with the Property Council of Australia Method of Measurement. The furniture and furnishings depicted are excluded from the lease of this apartment except where expressly included in a leasing agreement or condition report. Tenants must refer to their leasing agreement and condition report for the list of inclusions. Furnishings should not be taken to indicate the final position of power points, TV connection points and the like. All graphics, including design and extent of tile/paver/carpet areas, landscaping, balustrades, louvres, sun shading devices, fencing, privacy screens, services equipment are for illustrative purposes only and are not to be relied on as a representative of the final product.

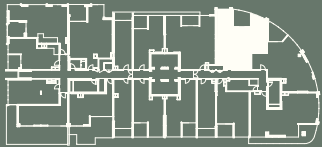


APARTMENT TYPE B3.1

2 BED  2 BATH 

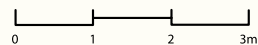
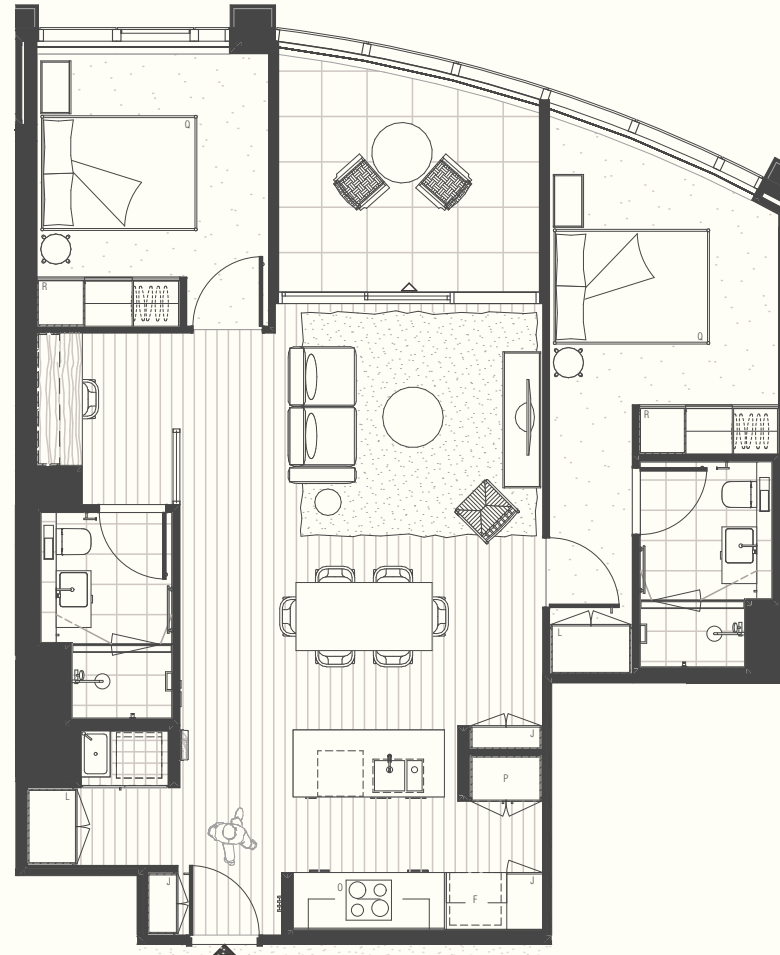
Apartment Area: 94m²
 Balcony/Winter Garden Area: 11m²
 Total Area: 105m²

| | | | |
|---------|---|----------------|---|
| Access | ▲ | Balcony Access | △ |
| Fridge | F | Queen Bed | Q |
| Pantry | P | Linen | L |
| Oven | O | Robe | R |
| Joinery | J | | |



Important Notice

This floor plan was produced prior to construction and while the information contained herein is believed to be correct it is not guaranteed. Changes will undoubtedly be made during construction. The plan does not show additional features such as hot water systems, services or bulkheads necessary for services. Dimensions, areas and scale of floor plans are approximate only. Areas have been calculated in accordance with the Property Council of Australia Method of Measurement. The furniture and furnishings depicted are excluded from the lease of this apartment except where expressly included in a leasing agreement or condition report. Tenants must refer to their leasing agreement and condition report for the list of inclusions. Furnishings should not be taken to indicate the final position of power points, TV connection points and the like. All graphics, including design and extent of tile/paver/carpet areas, landscaping, balustrades, louvres, sun shading devices, fencing, privacy screens, services equipment are for illustrative purposes only and are not to be relied on as a representative of the final product.

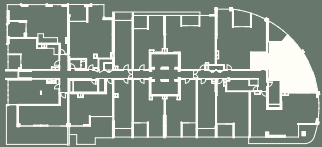


APARTMENT TYPE B4.1

2 BED  2 BATH 

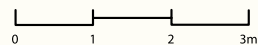
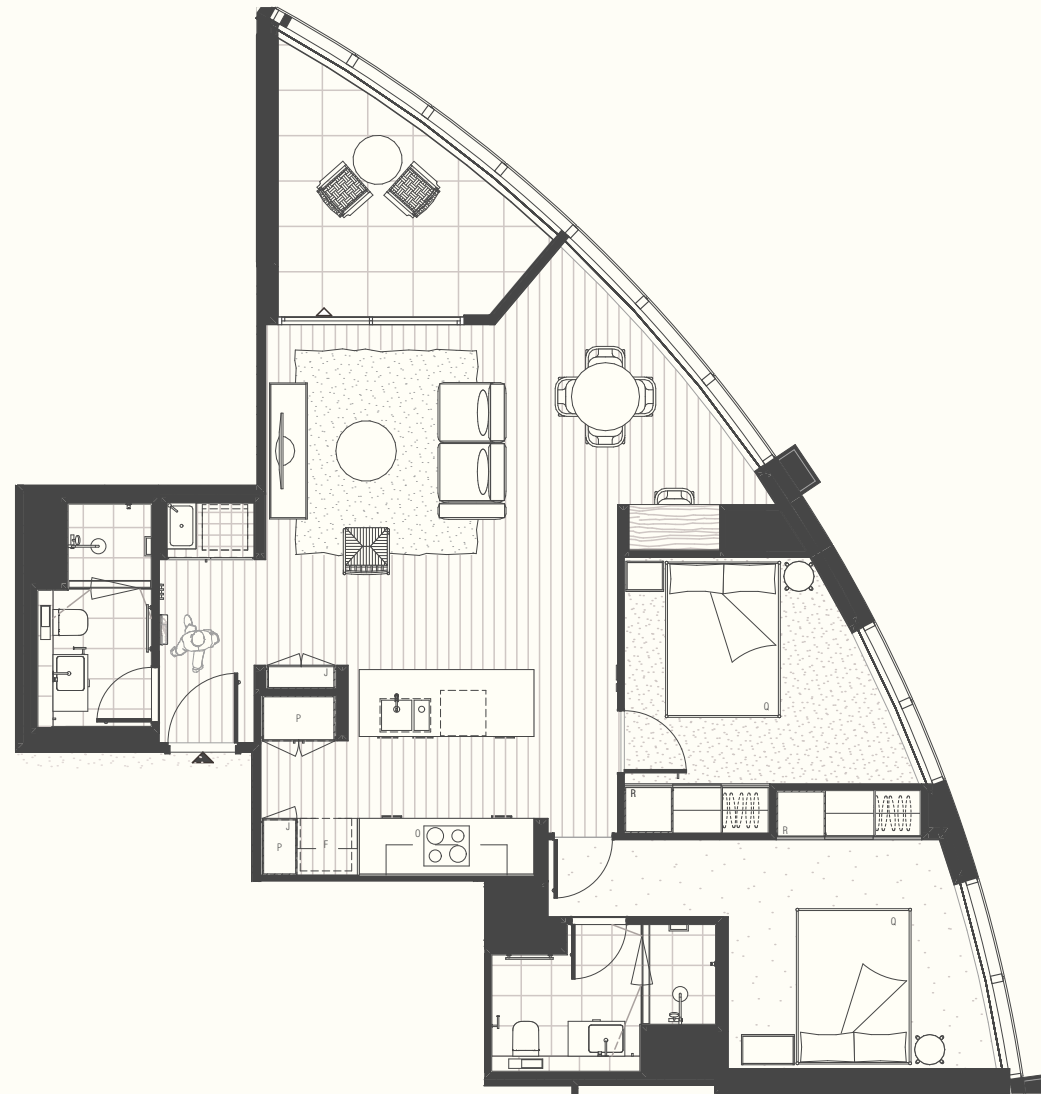
Apartment Area: 90m²
 Balcony/Winter Garden Area: 10m²
 Total Area: 100m²

| | | | |
|---------|---|----------------|---|
| Access | ▲ | Balcony Access | △ |
| Fridge | F | Queen Bed | Q |
| Pantry | P | Linen | L |
| Oven | O | Robe | R |
| Joinery | J | | |



Important Notice

This floor plan was produced prior to construction and while the information contained herein is believed to be correct it is not guaranteed. Changes will undoubtedly be made during construction. The plan does not show additional features such as hot water systems, services or bulkheads necessary for services. Dimensions, areas and scale of floor plans are approximate only. Areas have been calculated in accordance with the Property Council of Australia Method of Measurement. The furniture and furnishings depicted are excluded from the lease of this apartment except where expressly included in a leasing agreement or condition report. Tenants must refer to their leasing agreement and condition report for the list of inclusions. Furnishings should not be taken to indicate the final position of power points, TV connection points and the like. All graphics, including design and extent of tile/paver/carpet areas, landscaping, balustrades, louvres, sun shading devices, fencing, privacy screens, services equipment are for illustrative purposes only and are not to be relied on as a representative of the final product.

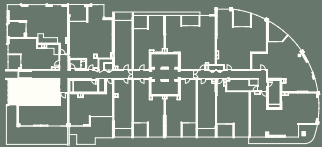


APARTMENT TYPE D2.1

2 BED  2.5 BATH 

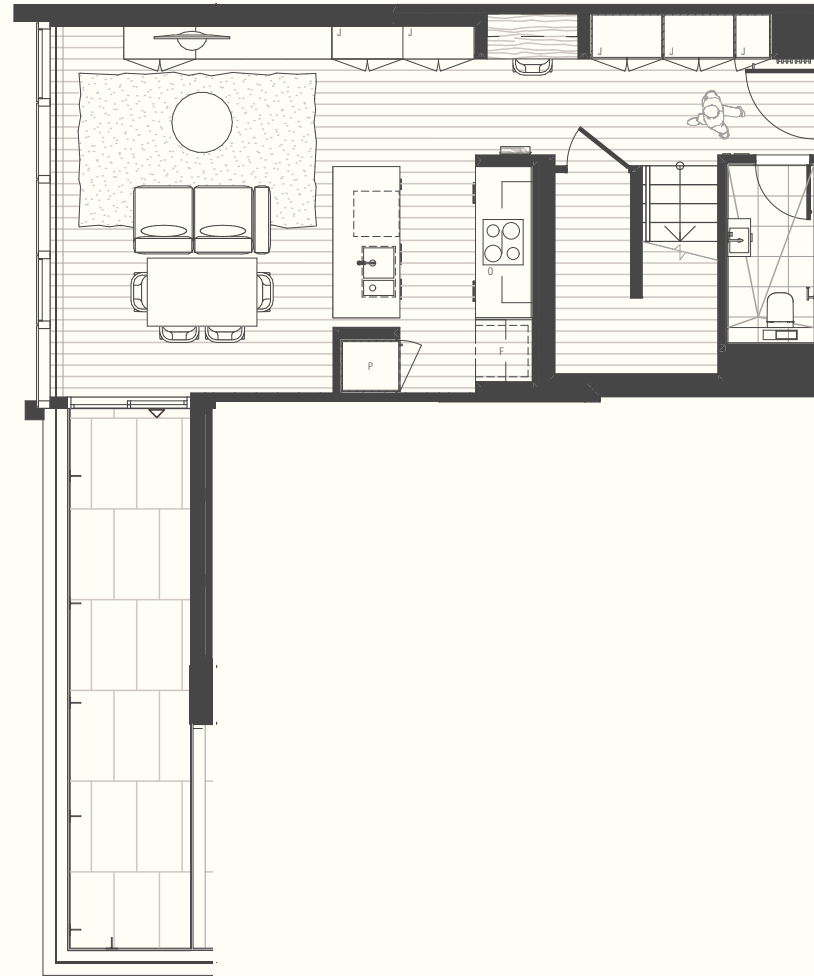
Apartment Area: 107m²
 Balcony/Winter Garden Area: 44m²
 Total Area: 151m²

| | | | |
|---------|---|----------------|---|
| Access | ▲ | Balcony Access | △ |
| Fridge | F | Queen Bed | Q |
| Pantry | P | Linen | L |
| Oven | O | Robe | R |
| Joinery | J | | |

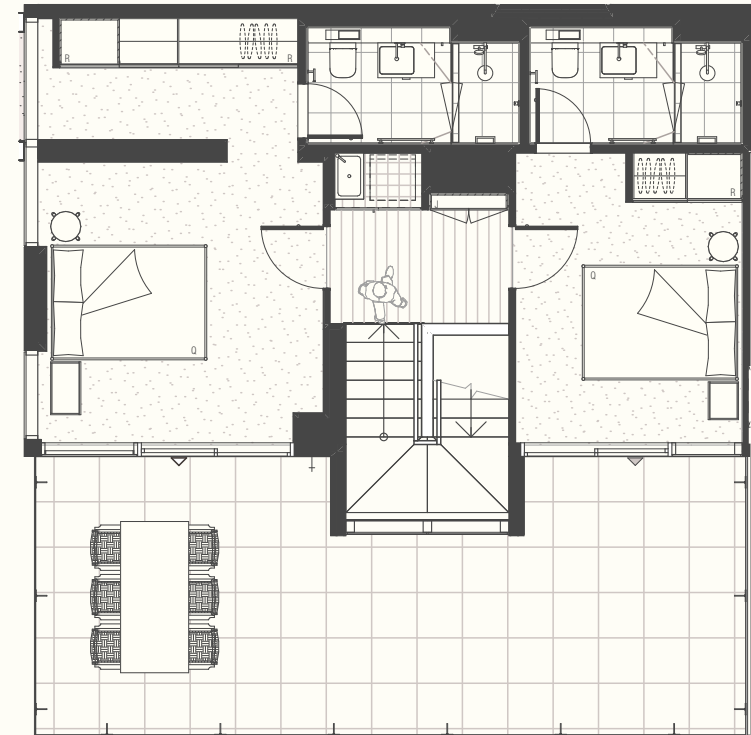
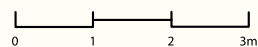


Important Notice

This floor plan was produced prior to construction and while the information contained herein is believed to be correct it is not guaranteed. Changes will undoubtedly be made during construction. The plan does not show additional features such as hot water systems, services or bulkheads necessary for services. Dimensions, areas and scale of floor plans are approximate only. Areas have been calculated in accordance with the Property Council of Australia Method of Measurement. The furniture and furnishings depicted are excluded from the lease of this apartment except where expressly included in a leasing agreement or condition report. Tenants must refer to their leasing agreement and condition report for the list of inclusions. Furnishings should not be taken to indicate the final position of power points, TV connection points and the like. All graphics, including design and extent of tile/paver/carpet areas, landscaping, balustrades, louvres, sun shading devices, fencing, privacy screens, services equipment are for illustrative purposes only and are not to be relied on as a representative of the final product.



LOWER



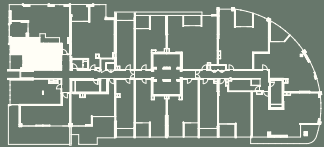
UPPER

APARTMENT TYPE D2.2

2 BED  2.5 BATH 

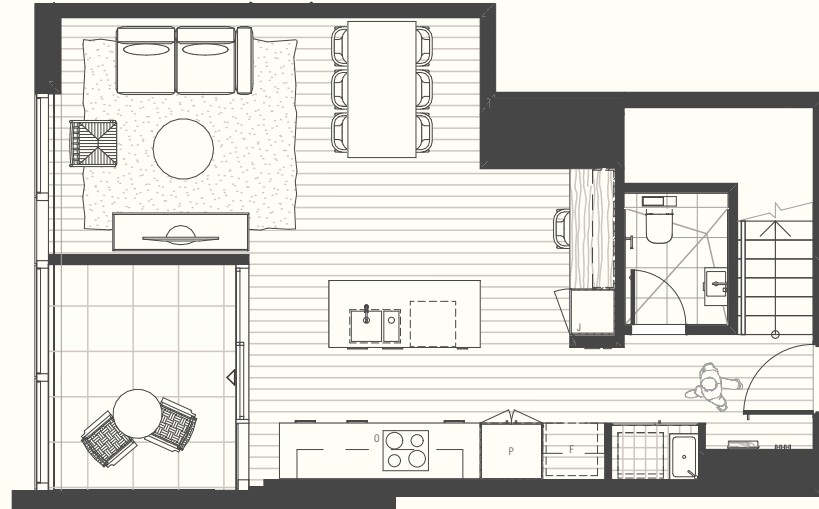
Apartment Area: 107m²
 Balcony/Winter Garden Area: 8m²
 Total Area: 115m²

| | | | |
|---------|---|----------------|---|
| Access | ▲ | Balcony Access | △ |
| Fridge | F | Queen Bed | Q |
| Pantry | P | Linen | L |
| Oven | O | Robe | R |
| Joinery | J | | |

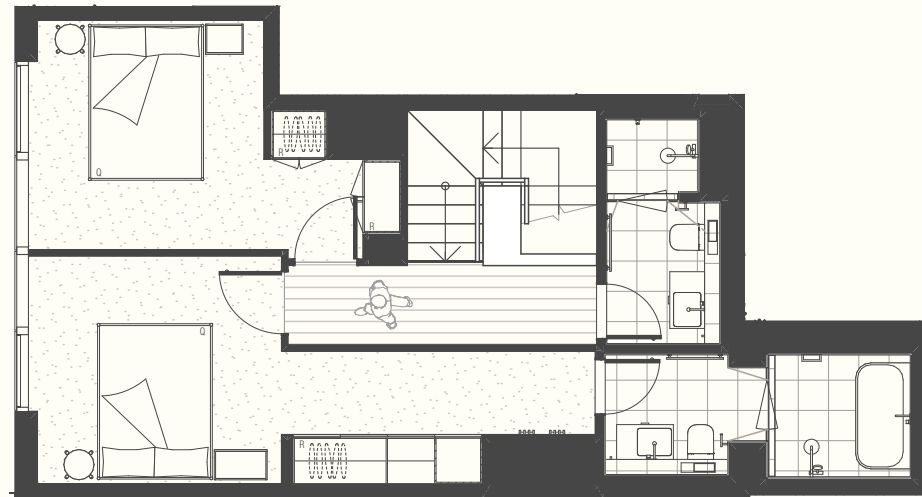


Important Notice

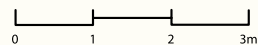
This floor plan was produced prior to construction and while the information contained herein is believed to be correct it is not guaranteed. Changes will undoubtedly be made during construction. The plan does not show additional features such as hot water systems, services or bulkheads necessary for services. Dimensions, areas and scale of floor plans are approximate only. Areas have been calculated in accordance with the Property Council of Australia Method of Measurement. The furniture and furnishings depicted are excluded from the lease of this apartment except where expressly included in a leasing agreement or condition report. Tenants must refer to their leasing agreement and condition report for the list of inclusions. Furnishings should not be taken to indicate the final position of power points, TV connection points and the like. All graphics, including design and extent of tile/paver/carpet areas, landscaping, balustrades, louvres, sun shading devices, fencing, privacy screens, services equipment are for illustrative purposes only and are not to be relied on as a representative of the final product.



LOWER



UPPER

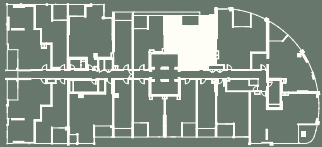


APARTMENT TYPE 01 (B2)

2 BED  2 BATH 

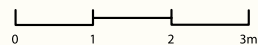
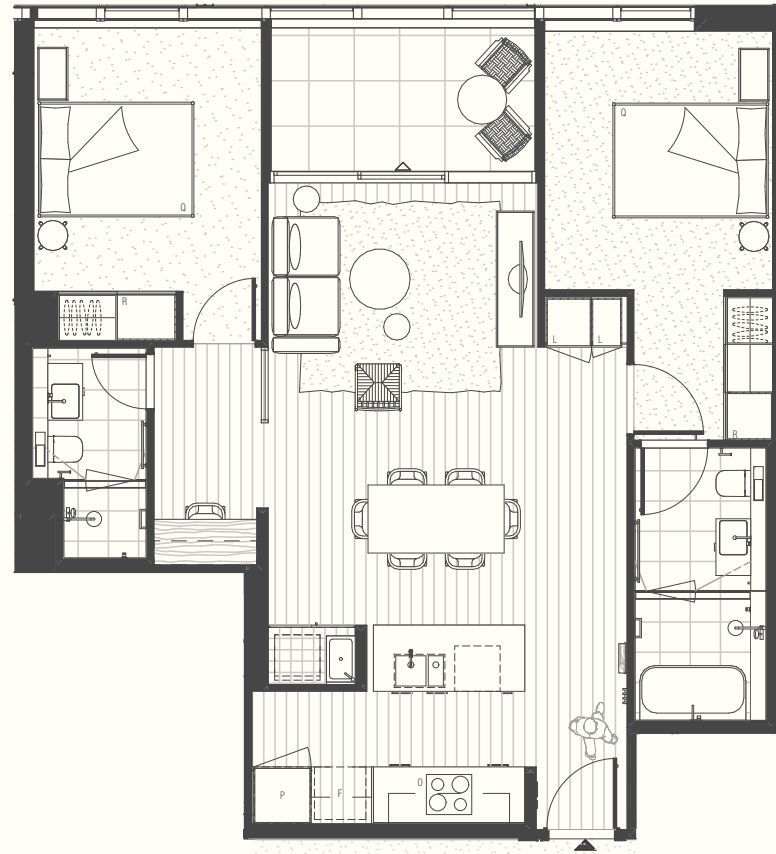
Apartment Area: 92m²
 Balcony/Winter Garden Area: 8m²
 Total Area: 100m²

| | | | |
|---------|---|----------------|---|
| Access | ▲ | Balcony Access | △ |
| Fridge | F | Queen Bed | Q |
| Pantry | P | Linen | L |
| Oven | O | Robe | R |
| Joinery | J | | |



Important Notice

This floor plan was produced prior to construction and while the information contained herein is believed to be correct it is not guaranteed. Changes will undoubtedly be made during construction. The plan does not show additional features such as hot water systems, services or bulkheads necessary for services. Dimensions, areas and scale of floor plans are approximate only. Areas have been calculated in accordance with the Property Council of Australia Method of Measurement. The furniture and furnishings depicted are excluded from the lease of this apartment except where expressly included in a leasing agreement or condition report. Tenants must refer to their leasing agreement and condition report for the list of inclusions. Furnishings should not be taken to indicate the final position of power points, TV connection points and the like. All graphics, including design and extent of tile/paver/carpet areas, landscaping, balustrades, louvres, sun shading devices, fencing, privacy screens, services equipment are for illustrative purposes only and are not to be relied on as a representative of the final product.

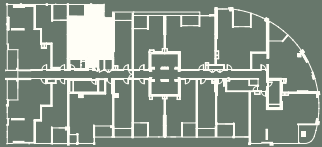


APARTMENT TYPE 15 (B7)

2 BED  2 BATH 

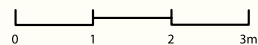
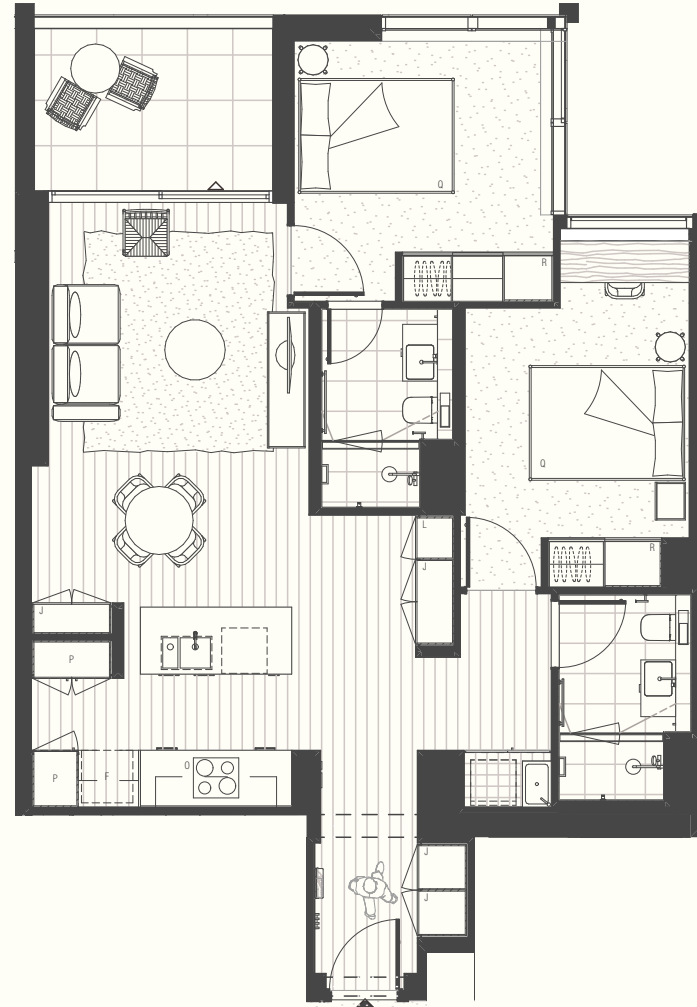
Apartment Area: 87m²
 Balcony/Winter Garden Area: 7m²
 Total Area: 94m²

| | | | |
|---------|---|----------------|---|
| Access | ▲ | Balcony Access | △ |
| Fridge | F | Queen Bed | Q |
| Pantry | P | Linen | L |
| Oven | O | Robe | R |
| Joinery | J | | |



Important Notice

This floor plan was produced prior to construction and while the information contained herein is believed to be correct it is not guaranteed. Changes will undoubtedly be made during construction. The plan does not show additional features such as hot water systems, services or bulkheads necessary for services. Dimensions, areas and scale of floor plans are approximate only. Areas have been calculated in accordance with the Property Council of Australia Method of Measurement. The furniture and furnishings depicted are excluded from the lease of this apartment except where expressly included in a leasing agreement or condition report. Tenants must refer to their leasing agreement and condition report for the list of inclusions. Furnishings should not be taken to indicate the final position of power points, TV connection points and the like. All graphics, including design and extent of tile/paver/carpet areas, landscaping, balustrades, louvres, sun shading devices, fencing, privacy screens, services equipment are for illustrative purposes only and are not to be relied on as a representative of the final product.

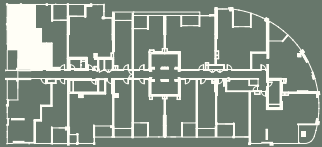


APARTMENT TYPE 13 (B6.1)

2 BED  2 BATH 

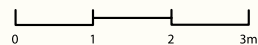
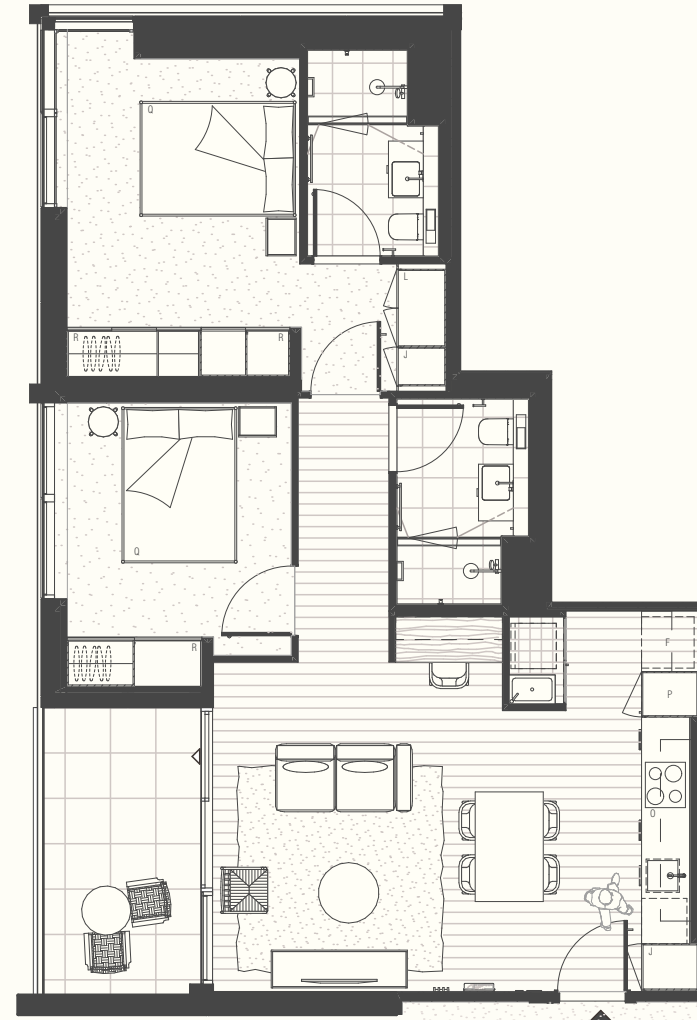
Apartment Area: 85m²
 Balcony/Winter Garden Area: 8m²
 Total Area: 93m²

| | | | |
|---------|---|----------------|---|
| Access | ▲ | Balcony Access | △ |
| Fridge | F | Queen Bed | Q |
| Pantry | P | Linen | L |
| Oven | O | Robe | R |
| Joinery | J | | |



Important Notice

This floor plan was produced prior to construction and while the information contained herein is believed to be correct it is not guaranteed. Changes will undoubtedly be made during construction. The plan does not show additional features such as hot water systems, services or bulkheads necessary for services. Dimensions, areas and scale of floor plans are approximate only. Areas have been calculated in accordance with the Property Council of Australia Method of Measurement. The furniture and furnishings depicted are excluded from the lease of this apartment except where expressly included in a leasing agreement or condition report. Tenants must refer to their leasing agreement and condition report for the list of inclusions. Furnishings should not be taken to indicate the final position of power points, TV connection points and the like. All graphics, including design and extent of tile/paver/carpet areas, landscaping, balustrades, louvres, sun shading devices, fencing, privacy screens, services equipment are for illustrative purposes only and are not to be relied on as a representative of the final product.

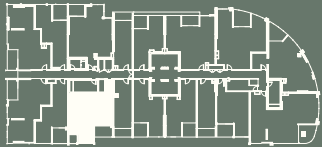


APARTMENT TYPE 10 (B5)

2 BED  2 BATH 

Apartment Area: 77m²
 Balcony/Winter Garden Area: 8m²
 Total Area: 85m²

| | | | |
|---------|---|----------------|---|
| Access | ▲ | Balcony Access | △ |
| Fridge | F | Queen Bed | Q |
| Pantry | P | Linen | L |
| Oven | O | Robe | R |
| Joinery | J | | |



Important Notice

This floor plan was produced prior to construction and while the information contained herein is believed to be correct it is not guaranteed. Changes will undoubtedly be made during construction. The plan does not show additional features such as hot water systems, services or bulkheads necessary for services. Dimensions, areas and scale of floor plans are approximate only. Areas have been calculated in accordance with the Property Council of Australia Method of Measurement. The furniture and furnishings depicted are excluded from the lease of this apartment except where expressly included in a leasing agreement or condition report. Tenants must refer to their leasing agreement and condition report for the list of inclusions. Furnishings should not be taken to indicate the final position of power points, TV connection points and the like. All graphics, including design and extent of tile/paver/carpet areas, landscaping, balustrades, louvres, sun shading devices, fencing, privacy screens, services equipment are for illustrative purposes only and are not to be relied on as a representative of the final product.

